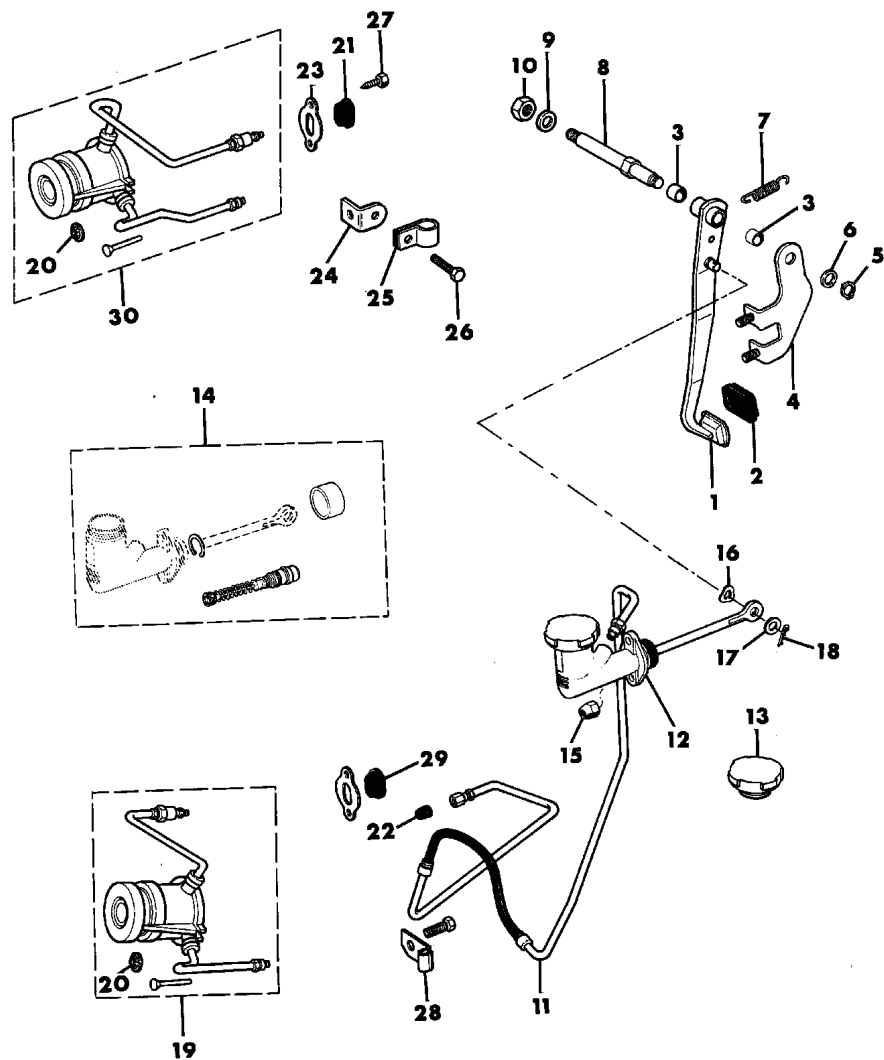


PEDAL, CLUTCH WRANGLER, YJ

Figure 6-500

8J06 500



ITEM	PART NUMBER	QTY	BODY	MODEL	DESCRIPTION
1	53003897	1			PEDAL, Clutch
2	52002750	1			COVER, Clutch Pedal
3	J0946177	2			BEARING, Clutch Pedal
4	J5359817	1			BRACE, Clutch Pedal Support
5	J4006471	1			RING, Retaining Clutch Pedal Shaft
6	J5351844	2			WASHER 3/4IDx1.100Dx.015THK Plain
7	J5351050	1			SPRING
8	J5359834	1			SHAFT, Clutch Pedal
9	J0120396	1			WASHER 1/2IDx1.063ODx.093thk
10	J4004311	1			LOCKNUT 1/2-20x.437
11					TUBE & HOSE ASSY, Hydraulic Clutch
	53004241	1			4 CYL. ENG.
	53004345	1			1987/1989: 6 Cyl. Eng. W/Peugeot BA 10/5 Trans
	53005925	1			1989/1990: 6 Cyl. Eng., W/AisinAX15
12	53004466	1			CYLINDER, Clutch Master
13	83504098	1			CAP, Clutch Master Cylinder
14	83504097	1			REPAIR PACKAGE, Clutch Master Cylinder
15	J0120376	2			NUT, Hex 5/16-18x.266
16	J4004616	1			WASHER, Wave 1/2IDx.781ODx.014thk
17	J0120396	1			WASHER, Flat 1/2IDx1.063ODx.093Thk.

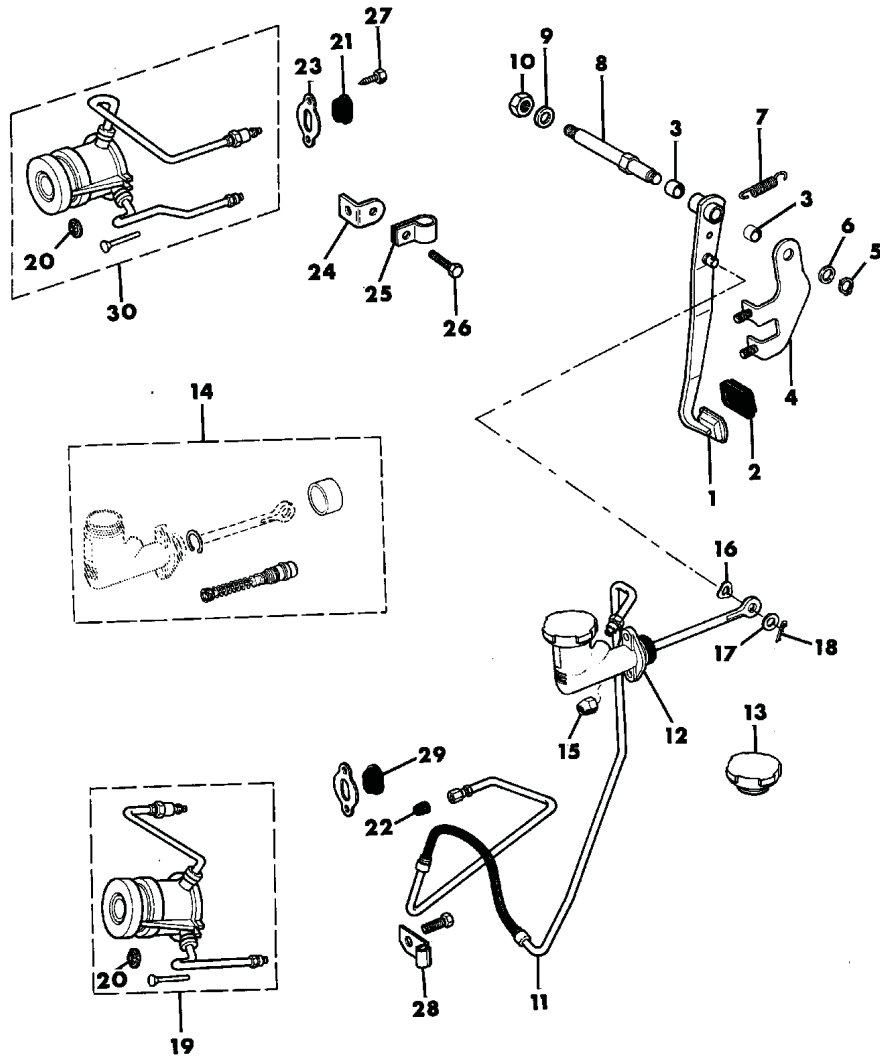
COMANCHE JEEP J10/J20 PICKUP TRUCK GRAND WAGONEER CHEROKEE WRANGLER (88J)

SERIES	LINE	BODY	ENGINE	TRANSMISSION
26 = J-10	J = Jeep	MJ = Comanche Pickup	1 = N/A	1 = N/A
Pickup-131" WB		SJ = Grand Wagoneer		
27 = J-20		Wgn., J-10 & J-20 Pickup		
Pickup-131" WB		XJ = Cherokee,		
63 = Comanche		Wagoneer Limited		
4WD-6 Ft Box		YJ = Wrangler		
64 = Comanche				
2WD-6 Ft Box				
66 = Comanche				
2WD-7 Ft Box				
65 = Comanche				
4WD-7 Ft Box				
73 = Cherokee				
2WD- 2 Dr.				
74 = Cherokee				
2WD- 4 Dr.				
77 = Cherokee				
4WD- 2 Dr.				
78 = Cherokee				
4WD- 4 Dr.				
79 = Cherokee				
4WD- 4 Dr.-Com.				
75 = Wagoneer				
4WD- 4Dr.				
15 = Grand				
Wagoneer 4 Dr.				
25 = J-10				
Pickup-119" WB				
81 = Wrangler 93"				
WB				
82 = Wrangler				
103" WB-Exp				

AR = use ase required - = Non illustrated part

PEDAL, CLUTCH WRANGLER, YJ  
Figure 6-500

8J06 500



ITEM	PART NUMBER	QTY	BODY	MODEL	DESCRIPTION
18	J0103374	1			PIN, Cotter
19	83503384	1			CLUTCH CONTROL PACKAGE, 4 Cyl. Eng.
	83503385	1			PIN, Spiral Head 1/8 x 5/8, 4 Cyl. Eng. (D)
20	J4006866	2			NUT, Push
21	53003807	1			GROMMET, 6 Cyl. Eng.
22	53004052	1			GROMMET, 4 Cyl. Eng.
23	53003361	1			COVER
24	J5364749	1			BRACKET
25	J0120521	1			CLIP, Closed Tube 1/4ID-.5lgx5/16holex.4wd
26	J9415162	1			SCREW, Hewx Flanged Head, #10-16x.375
27	11500821	2			BOLT Hex Head, M8-1.25x45mm
29	53004051	1			GROMMET, 4 Cyl Eng.
30					CLUTCH CONTROL PACKAGE, 6 Cyl. Eng.
	83503383	1			1987/1989: W/ Peugeot Transmission, Model BA 10/5
	05252137	1			1989/1990: W/ Aisin Transmission, Model AX15

COMANCHE JEEP J10/J20 PICKUP TRUCK GRAND WAGONEER CHEROKEE WRANGLER (88J)

SERIES	LINE	BODY	ENGINE	TRANSMISSION
26 = J-10	J = Jeep	MJ = Comanche Pickup	1 = N/A	1 = N/A
Pickup-131" WB		SJ = Grand Wagoneer		
27 = J-20		Wgn., J-10 & J-20 Pickup		
Pickup-131" WB		XJ = Cherokee,		
63 = Comanche		Wagoneer Limited		
4WD-6 Ft Box		YJ = Wrangler		
64 = Comanche				
2WD-6 Ft Box				
66 = Comanche				
2WD-7 Ft Box				
65 = Comanche				
4WD-7 Ft Box				
73 = Cherokee				
2WD- 2 Dr.				
74 = Cherokee				
2WD- 4 Dr.				
77 = Cherokee				
4WD- 2 Dr.				
78 = Cherokee				
4WD- 4 Dr.				
79 = Cherokee				
4WD- 4 Dr.-Com.				
75 = Wagoneer				
4WD- 4Dr.				
15 = Grand				
Wagoneer 4 Dr.				
25 = J-10				
Pickup-119" WB				
81 = Wrangler 93"				
WB				
82 = Wrangler				
103" WB-Exp				

AR = use ase required - = Non illustrated part